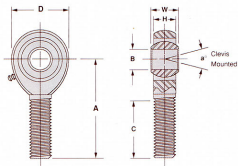


3 PIECE, EXTRA STRENGTH, HEAVY DUTY SHANK
METAL-TO-METAL

RM



PART NO.		DIMENSIONS IN INCHES										Radial Static Load Cap. Lbs.	Approx. Brg. Wt. Lbs.
Right Hand	Left Hand	B	W	H	A	D	Ball Dia. Ref.	C	Thread UNF-3A	8° Misalign. Angle			
RM3	RML3	.1900 + .0015 - .0005	.312 + .000 - .005	.250 ± .025	1.562 ± .015	.750 ± .010	.437	1.000	1.000	1/4-28	10	2,158	.043
RM4	RML4	.2500	.375	.281	1.875	.875	500	1.250	5/16-24	13	3,467	.072	
RM5	RML5	.3125	.437	.344	1.938	1.000	.625	1.250	3/8-24	12	5,323	.112	
RM6	RML6	.3750	.500	.406	2.125	1.125	.719	1.375	7/16-20	10	7,180	.160	
RM7	RML7	.4375	.562	.437	2.438	1.312	.812	1.500	1/2-20	12	9,620	.249	
RM8	RML8	.5000	.625	.500	2.625	1.500	.937	1.625	5/8-18	10	12,807	.382	
RM10	RML10	.6250	.750	.562	2.875	1.750	1.125	1.750	3/4-16	13	16,565	.602	
RM12	RML12	.7500	.875	.687	3.375	2.000	1.312	1.875	7/8-14	12	22,803	.920	

PART NO.		DIMENSIONS IN MILLIMETERS										Radial Static Load Cap. Kilograms	Approx. Brg. Wt. Grams
Right Hand	Left Hand	B	W	H	A	D	Ball Dia. Ref.	C	Thread UNF-3A	8° Misalign. Angle			
RM3	RML3	4.83 + .0381 - .0127	7.92 + .000 - .127	6.35 ± .127	39.67 ± .381	19.05 ± .254	11.10	25.40	1/4-28	10	979	20	
RM4	RML4	6.35	9.53	7.14	47.63	22.23	12.70	31.75	5/16-24	13	1,573	33	
RM5	RML5	7.94	11.10	8.74	49.23	25.40	15.88	31.75	3/8-24	12	2,415	51	
RM6	RML6	9.53	12.70	10.31	53.98	28.58	18.26	34.93	7/16-20	10	3,257	73	
RM7	RML7	11.11	14.27	11.10	61.93	33.32	20.62	38.10	1/2-20	12	4,364	113	
RM8	RML8	12.70	15.88	12.70	66.68	38.10	23.80	41.28	5/8-18	10	5,809	173	
RM10	RML10	15.88	19.05	14.27	73.03	44.45	28.58	44.45	3/4-16	13	7,514	273	
RM12	RML12	19.05	22.23	17.45	85.73	50.80	33.32	47.63	7/8-14	12	10,343	417	

MATERIALS

BALL	RACE	BODY
52100 STEEL R/C 56 MIN HARD CHROME PLATED	STEEL ALLOY HEAT TREATED ZINC PLATED CHROMATE TREATED	LOW CARBON STEEL ZINC PLATED CHROMATE TREATED