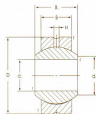


PB



PBA

Model NO.	Weight grt	Main dimensions(mm)							Ball diameter	Cs kgf	Csa kgf	Cs kgf
		d	D h6	B ±0.1	B ₁ 0 -0.1	d ₁	H	r				
PB-5	8.5	5	16	6	8	7.7	1	0.5	11.112(3/8)	800	190	400
PB-6	13	6	18	6.75	9	9	1	0.5	12.7 (1/2)	1000	250	510
PB-8	24	8	22	9	12	10.4	1	0.5	15.875(5/8)	1700	410	860
PB-10	39	10	26	10.5	14	12.9	1.2	0.5	19.05 (3/4)	2400	580	1200
PB-12	58	12	30	12	16	15.4	1.5	0.5	22.225(7/8)	3200	770	1600
PB-14	84	14	34	13.5	19	16.9	1.5	0.5	25.4 (1)	4100	990	2060
PB-16	111	16	38	15	21	19.4	2.5	0.5	28.575(1 1/8)	5100	1240	2570
PB-18	160	18	42	16.5	23	21.9	2.5	0.5	31.75 (1 1/4)	6300	1510	3140
PB-20	210	20	46	18	25	24.4	2.5	0.5	34.925(1 3/8)	7500	1820	3770
PB-22	265	22	50	20	28	25.8	2.5	0.5	38.1 (1 1/2)	9000	2200	4570
PB-25	390	25	56	22	31	29.6	3	0.5	42.862(1 7/8)	11300	2660	—
PB-28	410	28	66	25	35	32.30	3	0.5	47.625(1 7/8)	8870	3240	—
PB-30	610	30	66	25	37	34.8	3	0.5	50.4 (2)	15100	3440	—

Allowance slope angle

Model NO.	Weight grt	Main dimensions(mm)							Ball diameter	Cs kgf	Csa kgf
		d	D h6	B ±0.1	B ₁ 0 -0.1	d ₁	H	r			
PBA-5	8.5	5	16	6	8	7.7	1	0.5	11.112(3/8)	800	190
PBA-6	13	6	18	6.75	9	9	1	0.5	12.7 (1/2)	1000	250
PBA-8	24	8	22	9	12	10.4	1	0.5	15.875(5/8)	1700	410
PBA-10	39	10	26	10.5	14	12.9	1.2	0.5	19.05 (3/4)	2400	580
PBA-12	58	12	30	12	16	15.4	1.5	0.5	22.225(7/8)	3200	770
PBA-14	84	14	34	13.5	19	16.9	1.5	0.5	25.4 (1)	4100	990
PBA-16	111	16	38	15	21	19.4	2.5	0.5	28.575(1 1/8)	5100	1240
PBA-18	160	18	42	16.5	23	21.9	2.5	0.5	31.75 (1 1/4)	6300	1510
PBA-20	210	20	46	18	25	24.4	2.5	0.5	34.925(1 3/8)	7500	1820
PBA-22	265	22	50	20	28	25.8	2.5	0.5	38.1 (1 1/2)	9000	2200